

Pro-Flush Mobil

Designed for applications ranging from 10 to 1200 Gallons

all air conditioning & refrigeration plants - main & auxiliary engines up to 10,000hp
 black water systems - heat exchangers
 piping systems to 14" diameter

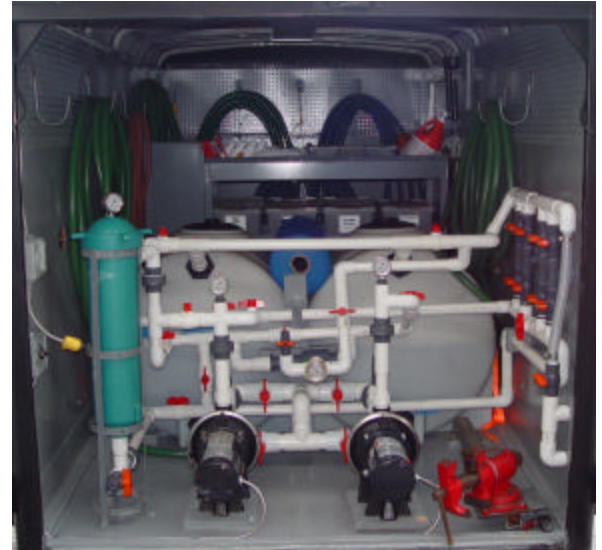
Trac Ecological's advanced descaling systems provide an environmental answer to internal, in-place cleaning, of all your vital onboard equipment!

Designed to handle ANY size flushing application, TRAC's **Pro-Flush Mobil™** is a very powerful tool employing only the highest quality parts and accessories. TRAC has introduced some very innovative design concepts on the **Pro-Flush Mobil™** in efforts to provide the user with the most versatile flushing unit on the market today.

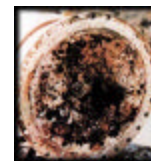
Versatility means you have full control over line pressure. Anywhere from -30PSG to 55PSI you can dial in line pressure to ensure you do not over-come system design pressure on.

With the ability to vacuum flush a system, **Pro-Flush Mobil™** becomes indispensable when servicing systems that normally operate under vacuum. This means not having to remove equipment to cap lines or worry about spilling product. Black water jobs are done in half the time!

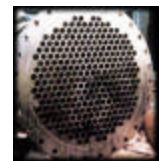
Using **Pro-Flush Mobil™** means the ability to perform up to four independent applications simultaneously! Service both fresh and salt water sides of an engine cooling system, or clean a chiller plant while flushing a black water line! The possibilities are endless when you have a **Pro-Flush Mo-**



Before



After



Specifications:

- Tandem axel trailer with fiberglass secondary containment flooring.
- Flow control system provides flow reversing & pressure regulating.
- Stainless steel gauges mounted on all supply & discharge lines.
- Anti-corrosive eductor provides vacuum flushing capabilities.
- Two 1.5" high output 110/220VAC (2) Hp centrifugal pumps.
- Aluminum storage rack custom made for tools & fitting bins.
- High flow filter, bag type, with bypass valve.

The Pro-Flush Mobil is perfect for:

- Engines
- HVAC systems
- Boilers
- Black water systems
- Piping systems
- Generators
- Heat exchangers
- Refinery service
- Gray water systems
- On-site service

Pro-Flush Mobil™	
in	1.2
w	6.9'
h	7.9'
dry	1750
lbs wet	7750
gpm	21.8
psi	5-55
inlet	1.5
outlet	1.25
zones	4
tank	(2) 225
app.	10-2000
pu mo	centrifugal
v	110/220
a	10.4/14.7
hz	50/60
ph	single
hp	2

Optional Equipment:

- 1" Ultra-force hose, fitted with 1"npt threaded connections
- Safety cut-off flow-switch plumbed into return line
- Product immersion heater kit
- Sch. 40 PVC construction
- In-line digital PH meter
- Flange & fitting field kit
- Onboard generator
- Secondary filter
- Flat jaw vise
- Tool box

The Pro-Flush™ has been designed for use with any of TRAC's environmentally friendly products. Careful attention has been given to ensure safety of both you and your equipment.

Dealer/Distributor Label

TRAC Ecological
 3921 SW 47th Ave. Suite 1020 Fort Lauderdale, FL 33314 USA
 001.954.987.2722 Voice ~ 001.954.583.4922 Voice
 001.954.583.4933 Fax
 www.TRAC-online.com ~ Info@TRAC-online.com